

Pos.	Description	Material	Size
1	Cover	PE	according to selection
2	Service opening	PE	according to selection
3	Inlet pipe	PE100	according to selection
4	Tank cylinder, double wall	PE100	ID2000, SN4
5	Outlet pipe	PE100	according to selection
6	Bottom	PE100	20 mm
7	Anchor bolt W-FA	AISI316	M20x180, 12 pcs
8	Ladder with handrail, non slippery steps	AISI316	optional
9	Service border H1100	AISI304	optional
10	Safety cage for ladder	AISI304	optional

Volume V (m3)	Height H (mm)	Product code
6	2040	502006
8	2640	502008
10	3240	502010
12	3940	502012
13	4240	502013
14	4540	502014
16	5140	502016

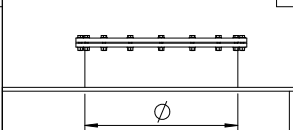
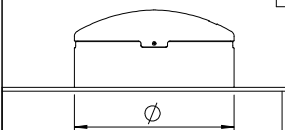
Volume	V=	m3
Service opening type	A <input type="checkbox"/> B <input type="checkbox"/>	
Ladder with handrail, non slippery steps	<input type="checkbox"/> YES / NO <input type="checkbox"/>	
Service border H1100	<input type="checkbox"/> YES / NO <input type="checkbox"/>	
Safety cage for ladder	<input type="checkbox"/> YES / NO <input type="checkbox"/>	
Outlet pipe diameter	DN1 =	
Outlet pipe from bottom plate	H1 =	mm
Inlet pipe diameter	DN2 =	
Inlet pipe from ceiling plate	H2 =	mm
Inlet angle (measured clockwise from OUTLET)	α =	°
Ladder angle (measured clockwise from OUTLET)	β =	°

Ø760 cover PE (insulated)

A

Ø760 cover PE (with gasket)

B



Drawn:			
Approved:			
Mass: kg	NA	Product code:	
Rev.	0		