

Pos.	Description	Material	Size
1	Cover	PE	according to selection
2	Service opening	PE	according to selection
3	Inlet pipe	PE100	according to selection
4	Tank cylinder, double wall	PE100	ID2400, SN4
5	Outlet pipe	PE100	according to selection
6	Bottom	PE100	20 mm
7	Anchor bolt W-FA	AISI316	M20x180, 16 pcs
8	Ladder with handrail, non slippery steps	AISI316	optional
9	Service border H1100	AISI304	optional
10	Safety cage for ladder	AISI304	optional

Volume V (m3)	Height H (mm)	Product code
10	2340	502410
12	2740	502412
14	3140	502414
16	3640	502416
18	4040	502418
20	4540	502420
22	4940	502422
24	5440	502424

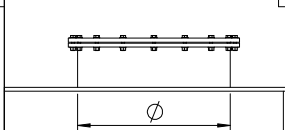
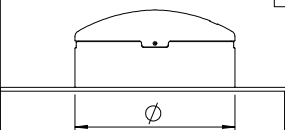
Volume	V=	m3
Service opening type	A <input type="checkbox"/> B <input type="checkbox"/>	
Ladder with handrail, non slippery steps	<input type="checkbox"/> YES / NO <input type="checkbox"/>	
Service border H1100	<input type="checkbox"/> YES / NO <input type="checkbox"/>	
Safety cage for ladder	<input type="checkbox"/> YES / NO <input type="checkbox"/>	
Outlet pipe diameter	DN1 =	
Outlet pipe from bottom plate	H1 =	mm
Inlet pipe diameter	DN2 =	
Inlet pipe from ceiling plate	H2 =	mm
Inlet angle (measured clockwise from OUTLET)	α =	°
Ladder angle (measured clockwise from OUTLET)	β =	°

Ø760 cover PE (insulated)

A

Ø760 cover PE (with gasket)

B



Drawn:			
Approved:			
Mass: kg	NA	Product code:	/
Rev.			0